



# Lake Quilters' Tidings

June 2009

Volume 18, Issue 6

President, Cindy Stachelski

Editor, Gwen Bruington



## Programs and Workshops

By Kinza Pickelsimer

\*\*\*\*\*NOTICE!\*\*\*\*\*

**Our June meeting will be held at Halesford Baptist Church**

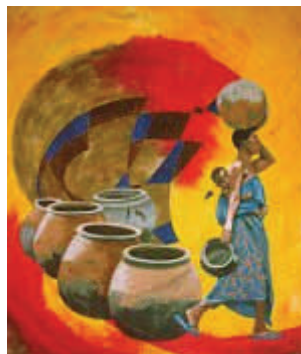
\*\*\*\*\*

**NOTE:** Prior to the June meeting and planned program, Susan Palmer will be selling tickets - for the last time - for the Virginia Wildflowers Quilt....the drawing will be held after our featured speaker, and prior to the start of the regular meeting. See all of you at Halesford Baptist Church!

*Susan Palmer*

### June 23—Program (1:00 pm at Halesford Baptist Church)

After graduating from Drexel University in Philadelphia with a degree in design, **Hollis Chatelain** went to Togo, West Africa, with the Peace Corps. She met her Swiss husband in the village where she was assigned as an agricultural volunteer. They were married in the traditional African way and lived a simple village life with no electricity or running water. Their first child was delivered by midwives in the glow of a kerosene lamp. The richness of these experiences has found its way into the art of her quilts.



Since 1980, Hollis has lived most of her life overseas. In Africa, she worked on her quilts in a 9' x 9' studio with only an overhead fan to combat the 100-plus degree temperatures which existed for much of the year. During that time she taught drawing and color to villagers. In Benin, she began purchasing locally produced white cotton cloth that she dyed and painted with fibier-reactive dyes and pigments, expanding the range of her creativity.

In 1996, Hollis returned to the United States. Six months after moving back, her longing for Africa was so great that she started to paint African images to bring back memories of the life she loved so much.

Hollis has had quilts exhibited in many national and international shows. Her work can be found in private collections around the world. She plans to continue make quilts with African imagery to share the joy, harmony, and pride of these people"... instead of the suffering and turmoil we so commonly hear about in the news.

*(continued on page 3)*

### INSIDE THIS ISSUE

2009 Officers	4
Block of the Month	7
Buzzings from the Bees	8
Challenge 2009	6
Charity Bee News	4
Featured Bee	7
Membership	2
Notices	5
President's Message	2
Pillow Pal Info	2
Quilt Show	4
Retreat News	6
Sunshine	5
Treasurer's Report	4
Volunteer Clean-up	2
Weather Cancellations	2

For up-to-date information and photos of Guild happenings... Be sure to visit our website at <http://www.lakequilters.org>

Email additions or questions to [bonnie@lakequilters.org](mailto:bonnie@lakequilters.org)  
Bonnie Bull,  
Webmaster

### NEXT MEETING

**July 28, 2009**

Trinity Ecumenical Parish

**1:00 pm**

Block of the Month 12:00 Noon

Board Meeting September 4th

10:00 am @ Cindy

Stachelski's home

**PLEASE TURN OFF  
CELL PHONES  
DURING MEETINGS**

## Ripples From Our President

By Cindy Stachelski



I hope you are all enjoying your summer but getting some quilting in too. You wouldn't want to lose touch with your creative side.

We are making a small change to our delivery of hard copies of our newsletter. If you don't get your newsletter by email (which is really the best way to get it) and need a paper copy, you will now just check your name off a list at the "Welcome" table and be given a copy of it. You will not have your name on the copy since we no longer send them through the mail. This will save time for those handling the newsletter and we think it will be more cost effective too since many newsletters are never picked up and with a name on it, we can't give it to someone else. We will try this for awhile and see how it works out. If you have any comments about this, please let me know.

Enjoy this warm weather, it's what we were wishing for all winter!!

*Cindy Stachelski*, President

## Membership News

We have 1 new member who joined the Guild in May. Please be sure and give her a warm welcome at the June meeting.

**Robin Arnett**

*Paula Stevens*

PS—Don't forget your nametags!



### WEATHER CANCELLATIONS

Notice of guild meeting cancellations due to bad weather can be found on Roanoke's NBC TV station Channel 10. Or visit the WSLs website at [www.norwestinteractive.com/wsls/sls/weather/closings\\_and\\_delays/](http://www.norwestinteractive.com/wsls/sls/weather/closings_and_delays/)

Kinza Pickelsimer is the contact for cancellations should you have questions.

### UPDATED PILLOW PAL INSTRUCTIONS

For those of you who found it difficult to sew Pillow Pals together, here are a few modifications to the instructions:

Get your arms and legs stuffed and ready to go. Lay out a piece of batting with the face on top. Starting at the top right hand corner, begin stitching as close to the edge of the fabric as you can, positioning each arm and leg as you go, and inserting a folded label on one of the lower sides. As you stitch across the top of the face, wrap the yarn hair around three fingers, laying the loops at the top and stitching. All this is done as you stitch the face to the batting. After stitching the back to the other piece of batting, pin right sides together across the top and sides, leaving the feet hanging out. Since only the arms need to be inside, it will be much easier to sew. After turning and stuffing (you can use torn up batting if you don't have fiberfill) turn under remaining seam and stitch the little guy across the butt.

Since we need a lot of these, how about getting one kit, use the arms and legs as patterns, cut your batting, face and back about 8 1/2 x 11 1/2 inches and create a few additional ones. The most time consuming part is making and stuffing the arms and legs. If they are made of flannel or fleece, they are easier to do and don't require as much clipping. The heart can be attached with Heat'n'Bond. Any kind of yarn can be used for hair, or strips of rickrack or fabric. Draw a simple smiling mouth, eyes and brows and nose if desired using red and black magic markers. It is fairly simple to get an assembly line going, and you can make quite a few in a morning. Please help us get more of these popular toys ready for our charity organizations. They are all asking for them.

*Sandra Ferguson*

### Volunteer Clean-Up Schedule

Thanks to everyone who offered to set up before and clean up after Guild meetings. If you are unable to attend, please find a member to substitute for you. Try to arrive by 11:30 to finish setting up in time for Quilt in a Year at noon. Clean-up immediately follows the Guild meeting. Please remember to remove any trash bags that our members fill and visit the dumpster on the way home.

As a reminder, here are those who signed up for June:

**June 23 (at Halesford Baptist Church):** Gayla Heath, Donna Kittelson, Joyce Moorman, Joyce Noell, Sue Dixon

*Betty Huffman*

## Programs and Workshops (Continued from Page 1)

### **July 28 - Program (1:00) HOME-GROWN TECHNIQUES (Refreshments will be served)**

Please come and join in our Quilting Gala. This is an event you will not want to miss! Ladies from our guild will be demonstrating the following:

- *Prairie Points* (Quick and Easy) - Prairie points make a charming finish, but they require a lot of time and inclination to cut, piece, fold, pin, and stitch individually to a quilt. Luckily, you can get almost the same look with much less work with continuous prairie points. This nifty technique streamlines the cutting and positioning steps for points in a flash.
- *Cording and Piping* - Adding a thin line of color along the edge of the quilt brings a distinctive touch of dimension and definition. Cording and/or piping don't take much extra time or effort and attaching is easy.
- *Trapunto* - A quilter's skill at stitching decorative patterns is frequently more highly regarded than artful piecing, and solid color quilts with fine stitches or intricately worked patterns are often of great value and so rewarding.
- *Flowers with Dimension* - dimensional techniques add texture and further visual interest to appliqué designs.
- *Flat Hand Appliqué* - It seems as though everyone either wants to learn how to appliqué or is already doing it (hand or machine). If you know how to do points, inverted points and curves then you can appliqué.
- *Quilt as you go* - Wouldn't it be nice to be finished in one easy demonstration? Just think—if you know how to do this, then you could make more charity quilts at home.
- *Binding* - Pieced and appliquéd, basted and quilted; time at last to choose how your quilt will be edged. Think of finishing as one last wonderful chance to enhance your work and make a statement.
- *Flying Geese* - Having problems making flying geese? They're really much easier than you would think. There will be several different methods presented—one of them will probably be just the right one for you to use in your future quilting projects.

### **August 25 - Program (1:00 PM) - Stevii Graves Lecture, "The Judge and the Juror"**

Stevii Graves has been involved with quilt making since 1975 and has been a juror and judge for competitions throughout the U.S. She has been the judging coordinator for Road to California since 2002. Stevii is a past President of the California Heritage Quilt Project, has served as President of Quilt San Diego/Visions and on the boards of several quilt guilds. Her quilts have been published in numerous books and magazines as well as having been exhibited both nationally and internationally. She has edited two Visions catalogues and is the co-author of Contemporary Quilting, which was released in the spring of 2005. She currently lives in Leesburg, VA with her husband, Randy. Her three children live close by, as do her three grandchildren.

Stevii is a graduate of Hampton University with a degree in Human Ecology Education. She worked for eight years for the United States Navy Memorial in Washington, DC as a fundraiser. She was awarded the Department of Navy's Meritorious Public Service Award in 2000. Stevii loves all types and styles of quilt making and has worked tirelessly to be sure that quilts are displayed in a variety of venues.

Books: Cindy Walter and Stevii Graves, Contemporary Quilting, WI, Krause Publications, 2005, Stevii Thompson Graves (editor), Visions: Quilt Expressions, Nashville, TN: Rutledge 1998, Stevii Thompson Graves (editor), Visions: Layers of Excellence, Lafayette, CA: C&T Publishing, 1994, Julie Scribner (editor), Stevii Graves (Technical Editor), Sew with the Stars, Burlingame, CA: P & B Textiles, 2002

Stevii's quilts appear in the following books: Basic Applique, WI: Krause Publications Tulips My Way, The Ultimate Half Log Cabin Book, Montrose, PA: Chitra Publications, 2001, Setting Solutions, Lafayette, CA: C & T Publishing, 2001, Red Violet Chain, More Snippet Sensations, WI: Krause Publications, 2000, Just Three Peas a Salad She Whined, Easy Art Quilts, Montrose, PA: Chitra Publications, 2000, Star Bright, A Visual Guide to Fabric Painting, Lafayette, CA: C & T Publishing, Wish you were Here, A group quilt.

## CHARITY BEE NEWS

At our last meeting, we received: 11 quilts, 10 pillow pals, 1 bear, 1 bib and 4 wheelchair bags. There are still a number of kits outstanding so please get them back in. **We are in need of Bears and Pillow Pals.** *Make sure you register anything you bring in, even if you didn't sign out a kit.*

**\*Note:** *Since our June meeting will be at Halesford Baptist Church, we won't have kits available, however we will be accepting finished items.*

*Thanks for all you've done.*

*All our agencies are very appreciative of your donations.*

*Franklin County Hospital Emergency: 30 bears*

*Franklin County Hospice: 5 lap quilts, 10 wheelchair bags*

*Franklin County Social Services (foster care): 5 lap quilts, 10 pillowcases*

*Franklin County Resource Center (shelter): 5 lap quilts, 10 wheelchair bags*

*Trinity Mission Health and Rehab: 7 lap quilts, 10 wheelchair bags*

*Bedford County Hospital: 28 bears, 6 pillow pals*

*Bedford County Social Services: 10 pillowcases, 4 quilts*

*Hospice: 4 lap quilts, 7 tote/walker bags, 4 bed-sized quilts*

*Bedford County Domestic Violence Center: 10 totes, 2 bed-sized quilts*

*Members of the charity committee made the deliveries: Sandy Kelso, Alice Vreeland, Donna Broomall, Sandra Ferguson, Katherine Lewis, Marcia Wright*

**Lake Quilters Guild**  
Presents  
**Our Quilted Treasures**  
**March 26 & 27, 2010**

Summer is fast approaching and you will probably have a ton of company. We realize you will not be doing a lot of sewing. But as you are sitting at the dock, take your quilt books and flip through them. You never know what ideas you might come up with. Then after the summer is over, you can jump right in and make those beautiful quilts that you were dreaming of.

I was also looking back over our website and by the way, Bonnie does such a great job with that. There were a lot of beautiful quilts that were in our "Show and Tell" that I certainly hope are entered in our Quilt Show. The only thing we ask, is that you don't put something in the show that you have put in our guild shows before.

We plan to have several quilt categories again this show. That will allow a number of you to be lucky Viewer's Choice winners.

The ladies are working on the raffle quilt and we hope to reveal it at our September meeting. You won't want to miss that meeting. A few ladies are working so hard for the benefit of all of us. Remember, the main purpose of our raffle quilt is to raise money to support the Guild's programs. The Quilt Show allows us to share with the community our love of quilting and hopefully create even more interest in quilts and our Guild. The show itself is almost a break-even proposition. With all of us working together, I am confident we will have another very successful show.

The Joyce's: *JOYCE MOORMAN & JOYCE NOELL*

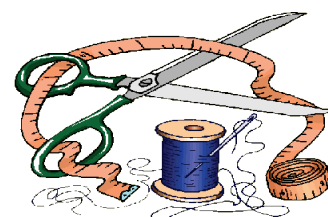


### Treasurer's Report

By

*Sandra Ferguson*

<b>Balance (4/30/09)</b>	<b>\$6857.61</b>
<i>Income:</i>	
Dues	240.00
Workshop Fees	300.00
BOM Raffle Quilt	95.00
<b>TOTAL INCOME</b>	<b>\$635.00</b>
<i>Expenses:</i>	
Newsletters	84.68
Charity	6.30
Membership	14.70
Quilt Retreat	100.00
Program	148.87
Returned Check	20.00
<b>TOTAL EXPENSES</b>	<b>\$374.55</b>
<b>Balance (5/31/09)</b>	<b>\$7118.06</b>



## 2009 Officers

**President**

Cindy Stachelski

[cmsquilter@gmail.com](mailto:cmsquilter@gmail.com)

**VPs Programs**

Kinza Pickelsimer

[twopickels@aol.com](mailto:twopickels@aol.com)

Susan Palmer

[snobirdone@aol.com](mailto:snobirdone@aol.com)

**VP Membership**

Paula Stevens

[paula.stevens@eds.com](mailto:paula.stevens@eds.com)

**Secretary**

Irene Capps

[anarene258@gmail.com](mailto:anarene258@gmail.com)

**Treasurer**

Sandra Ferguson

[arandsferguson@aol.com](mailto:arandsferguson@aol.com)



**NOTICES, TIPS, CLASSIFIEDS and QUIZZES**

**Notice**

**Peaks and Pieces Quilt Guild** in Bedford, Virginia, will hold its 13th annual quilt show at the Bedford Central Library from Wednesday, July 15, 9:00 a.m. through Tuesday, July 28, 5:00 p.m., during regular library hours (the library is closed on Sundays). The show is a display of over 100 quilts, wearable art and home accessories.

Viewers are invited to vote for their favorites.

**WANTED...**

Gwen Bruington is searching for a pattern from *Quiltmaker's All-Time Favorites-Spring '08* or *Quiltmaker's All-Time Favorites-Fall '00*, called "Retiring the Ties." If anyone has one of these issues she could borrow, please email, [gwenb1@b2xonline.com](mailto:gwenb1@b2xonline.com). Thanks!

FOR MEMBERS you know who need a bit of cheer, please contact our Sunshine Chair, Madeline Demchak



([madal687@yahoo.com](mailto:madal687@yahoo.com))



**Cathy Fandel**  
 1164 Dry Hill Road  
 Ferrum, VA 24088  
 (540) 365-7430  
[cathy@blueridgequilting.com](mailto:cathy@blueridgequilting.com)

**NOTICES**

- ◆ Trinity Ecumenical Parish requests **No Smoking** in its building or on the grounds
- ◆ Guild pins for sale through Sandra Ferguson, Treasurer
- ◆ Submit newsletter articles by 10th of month to:  
[gwenb1@b2xonline.com](mailto:gwenb1@b2xonline.com)

**Old Trinity Schoolhouse Quilt Shop**



*Broad Selection of Fabrics, Books, and Notions*

Visit our shop: 9am - 6pm Monday thru Saturday

Order Directly from our Web Site,  
[www.TrinityQuilts.com](http://www.TrinityQuilts.com)

3200 Trinity Road (I-81 to Exit 150B - 5.5 Miles North on US 220, Right at Trinity Road)

P.O. Box 189 • Fincastle, Virginia 24090

**540 • 992 • 1233**

**FABRICS, BOOKS, PATTERNS, NOTIONS, GIFTS & CLASSES**

NEW CLASS OFFERINGS:

Beginning Quilting-Starts 6/19/09

Midsummer's Dream Table Runner-7/9 & 7/16

Chenille Jacket-7/11/& 7/18

NEW FABRIC ARRIVALS:

**\*\*Nostalgia by April Cornell\*\* Dancing with the Fairies by elinor peace bailey\*\* Frosted Memories by Holly Taylor\*\***

**SMITH MOUNTAIN LAKE QUILTING**

130 SCRUGGS RD.-#214 (Lake Plaza)

MONETA, VA. 24121

540-719-7845

[www.smithmountainlakequilting.com](http://www.smithmountainlakequilting.com)

Hours: Mon-Fri 10-5 PM Wed 12-6 PM Sat 10-3PM

**THE SEWING STUDIO, INC.**

1310 Memorial Blvd S, Martinsville, VA 24112

(276) 632-5700

[bfeeny@embarqmail.com](mailto:bfeeny@embarqmail.com)

Hours M-F 8:30 am to 5 pm; Sat 10-2

Come and visit us in our roomy, well-lit store. We have 3000+ bolts of fabric; books, notions, patterns, and supplies for quilters.

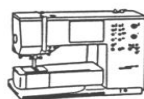
1st Tuesday of each month is our \$5.00 Sampler

*Authorized Babylock Dealer*

*Bernina elna Janome*

Your complete store for top quality machines, classes, notions & service. Family business since 1976.

**Alpine Sewing Machine Co.**



3609 Brambleton Ave.  
 Roanoke, VA 989-4412  
[alpinesewingmachine.com](http://alpinesewingmachine.com)

## 2009 Challenge: Think Green!

### Musings on "Green" by Your Challenge Coordinator

Recently, I was driving up I-81 from Roanoke to Winchester. I was in a "sea of green foliage." As I drove along, I counted some of the shades of green I was viewing. Since I had to pay attention to the traffic I may have missed some of them, but I came up with a total of 29.

Then I thought, why in this sea of green, did the government decide to use green on the road signs? I was thinking these signs are not any of the lovely shades of green that occur in nature. Then I looked down at my May birth stone ring which is an emerald (a very, very small emerald!) and I realized the signs are the same color as the stone in my ring. I'm still not sure why the signs are green, but the color can be found in nature.

I have had many opportunities as Challenge Coordinator this year to consider the color green. After all this study, I do like it, but have to confess that red is still my favorite color!

Remember the Challenge rules: make a small quilt that the perimeter is no more than 120 inches; have your work ready by the Guild's December Christmas party.

*Happy Quilting! Sue Dixon*

### Rose-Marie's Sewing Studio Quilting Cottage

(540) 297-1328

Rose-Marie's Quilting Cottage wants to remind you that Finished is Beautiful. Don't worry about the mistakes you think you have made. After it is quilted, no one including you will be able to find them. You will be able to use them or make a gift of them, etc. Looking forward to seeing them.



## BOONES COUNTRY STORE

2699 Jubal Early Hwy., Burnt Chimney, VA 24065

(3 miles from Burnt Chimney on Rt. 116)

(540) 721-2478 FAX: (540) 721-4831

Tues-Sat, 9:30-5:30 Friday until 7:00 PM

\* Still more new Quilt Pattern books have just arrived.

\* We have a full color line of sandstone fabrics by Quilting Treasures.

\* Upcoming Quilting classes are still being scheduled. Classes will be posted in the store as they are scheduled. Call or come by to check the list.

\* 108" wide quilt linings—new shipment has arrived:

Paisleys - blue, green, black, tan

Marbled - brown, blue

Tone on Tones

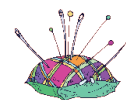
\* Let us do the cooking for your 4th of July picnic—We have ham biscuits, potato salad and macaroni salad, cakes and pies.

### LQG Annual Quilt Retreat November 6-8, 2009

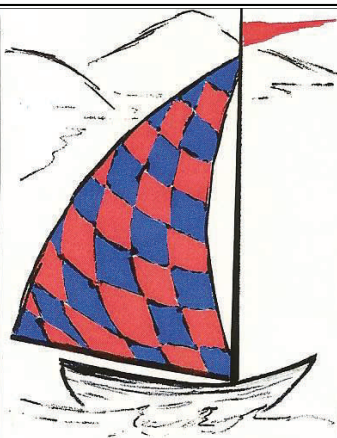
The retreat this year will be held at the Quality Inn Coliseum in Winston-Salem, NC. It's about a 2 hr. drive from Moneta. Registration will be limited to 23 people this year so get yours in early! Paula Stevens will be at the Guild Meeting and will take your registrations. If you prefer to mail them, the address is on the registration form.

Sandee Burt  
Paula Stevens  
Co-chairs

"America is not like a blanket—one piece of unbroken cloth, the same color, the same texture, the same size. America is more like a quilt—many pieces, many colors, many sizes, all woven and held together by a common thread."



*The Rev. Jesse Jackson*



**BATTEN DOWN  
THE PATCHES**

PROFESSIONAL  
LONGARM QUILTING  
By ELLAMAE LERZ

CUSTOM QUILTING  
TRAPUNTO  
EDGE TO EDGE QUILTING  
BASTING

540 520 5868  
ellamaelerz@yahoo.com

**June 2009 Featured Bee:  
The Ladies of the Evening Bee**

By Sandee Burt

The Ladies of the Evening Bee was created in September 2008. We began as a small group of women who work during the day and desired to share our love of quilting in the evening. Our initial group consisted of three experienced quilters and two beginners. Our group has grown to nine quilters (now all experienced). We meet on the first and third Thursdays of each month and Paula Stevens is gracious enough to allow us to use her home for our meetings. Our first project was a 9-patch square and our beginners ran away with that making table runners of 9-patch squares. From there, these beginners have given all the experienced quilters a challenge to keep up. Their enthusiasm has been inspiring.

Our projects have included mesh beach bags, a jelly roll quilt, a chenille quilt, and we are currently working on a Cotton Theory placemat.

Bee Members: Paula Stevens, Sandee Burt, Donna Robertson, Brenda Jones, Susanne McLaughlin, Avis Withers, Linda Dodd, Lee Wolf, Barbara McNab

***OOPS—We GOOFED!!***

Our apologies go to Chris Patane—last month we attributed the Featured Bee article to Sue Dittler, but it was actually written by Chris Patane.

**CLASSES, CLASSES, CLASSES**

Bowtuck purse, raleigh purse, aprons, Summer at the Lake Quilt, and Kids Camp! Also in June, What Judges Look for and Art Quilting with Marty Moon! Stop by store for details or check out our website!

**HATE STAIRS???** JUST RING OUR BELL!

The Downstairs Entrance to our Quilt Wonderland is Now open regular store hours!



**The General Store**  
**www.generalstoresml.com**  
 213 Scruggs Road  
 Moneta, VA 24121  
 540-721-3009

***Block of the Month 2009***

For our May Block of the Month, Sharon Pafford taught us how to make a wall-hanging for Flag Day. This “block” had a Friendship Star and then used Foundation Strip Piecing for the somewhat “wonky” stripes on the flag.



At our June meeting (**at Halesford Baptist Church**) Bette Gove’s project will be a banner using the theme of Fireworks for the 4th of July.

For a complete list of all the Holiday Banners we’ll be doing this year, you can go to the Guild website: <http://www.lakequilters.org/bom/2009BOM/>

Helen Buchanan is our chairperson for this year’s Block of the Month, so any questions should be directed to her. Email, [helenhodge@aol.com](mailto:helenhodge@aol.com).

**QUILTING ESSENTIALS**

405 Apperson Dr., Salem, VA 24153  
 540-389-3650

2000+ bolts of 100% Cotton Fabrics including a great selection of Flannels and 104” to 108” Quilt Backing Fabrics.

Books, Patterns, Notions, Quilting Supplies, Kits and Classes.

Also Anchor Floss and Aurifil Thread. We carry the Alto’s 2 Fabric Cutting System, the Alto Pro and most all other Alto supplies.

We also carry Locker Hooking supplies and provide classes.

Hours: Mon-Fri 10:00 am-5:30 pm • Sat 10:00 am-4:00 pm







## Buzzings from the Bees by Susan and Chris

- **Bag Ladies Bee** (Moneta area)—meets the 1st and 3rd Tuesday, 10:00 am to ??? at Mary Ann Spangler's. Bring lunch. Current project is Friendship Squares. **(Full at this time.)**
- **Bluewater Bee** (Moneta)—meets 1st Tuesday, 10:00 am to 1:00 pm, at Smith Mountain Lake Quilting Shop; Contact Marnie Brush. Working on a Charity Quilt for Bedford Social Services, and favors for the guild Christmas luncheon. Will display July 2009. **(Full at this time.)**
- **Buzzin' Bees** (Boones Mill)—meets 1st Thursday 9:00 am to ??? at Velma Meador's home. Bring lunch. Will display March 2009. **(Full at this time.)**
- **Hardy Bee** (Moneta)—meets 4th Tuesday, 9:00 am to noon, at Dot Jackson's home. The group will not meet during the summer; meetings will resume in September. At that time they will begin working on "row by row" quilts and continue making charity projects. Will display August 2009. **(Full at this time.)**
- **Kept in Stitches Bee** (Hillcrest Heights)—meets 1st and 3rd Thursday, 10:00 am to 3:00 pm, at Alma Carter's home. Bring lunch. Will be working on charity scrap quilts and UFO's. Will display October 2009. The bee will not be meeting in July and August. They will resume meeting in September. **(Full at this time.)**
- **Ladies of the Evening Bee** (Wirtz) meets 1st and 3rd Thursday evenings at 6:30 pm. at Paula Stevens' home, 205 Inlet Drive, Wirtz. Will display June 2009. **(Full at this time.)**
- **Lake Park Bee** (Penhook-Union Hall) meets first and third Tuesdays, 11:00 AM to 3:00 PM, at Edythe O'Connell home. Contact Edythe 576-5090 or Suzanne McLaughlin 540-420-4596 (cell #). Group will not meet during the summer months. Will resume Sept. 1, 2009. We will except new members at that time.
- **Material Girls Bee** (Walnut Run)—meets 1st and 3rd Tuesday, 9:30 am to 2:30 pm. Call Marcia Wright or Kate Holdgreve. Bring lunch. Will display Sept. 2009 and will display in October 2010. **(Full at this time.)**
- **River Queen Bee** (Goodview)—meets 3rd Tuesday, 12:30 pm at Jeanie Ireland's home. Working on UFO's, one of which is a charity quilt. Will display in August 2010. **(New Members welcome.)**
- **Sassy Stitchers Bee** (Roanoke)—*meeting time changed to 3rd Tuesday*, 10:00 am to 3 pm at St. John Lutheran Church. Contact Joyce Noell for information. Ongoing Block Exchange Project. Will display November 2009. **(Full at this time.)**
- **Shady Ladies Bee** (Moneta)—meets 1st Monday, 9:30 to 11:30 am at Jan Hagen's home. Beginning quilting is their focus. Next meeting will be on September 14th to work on a "mystery quilt." Will display January 2010. **(Full at this time.)**
- **Southside Bee** (Union Hall)—meets 2nd Thursday, 10:00 am to 2:00 pm. Bring lunch. Call daytime hours only Sandy Randall. **(Full at this time.)**
- **Stitches In Time** (Goodview)—Appliqué Bee meets 2nd Tuesday, 10:00 am. Bring lunch. Call Kinza Pickelsimer. Project: Hearts and Flowers blocks by Kathy Delaney. Will display in November 2010. **(Full at this time.)**
- **Sunshine Bee** (White House Corner/Huddleston)—meets 1st Thursday, 10:00 am to 2:00 pm, at Cindy Clark's home. Bring lunch. Will display in April 2010. **(Full at this time.)**

**IF YOU WISH TO BECOME A MEMBER OF A BEE or IF YOU HAVE ANY UPDATES/CHANGES FOR THE ABOVE BEES, CALL SUE DITTLER OR CHRIS PATANE BEFORE THE 3RD OF EACH MONTH.**