



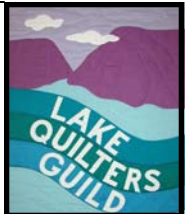
President, Linda Quinn

# Lake Quilters' Tidings

June, 2010

Volume 19, Issue 6

Editor, Stephanie Schaefer



## Programs and Workshops

By Susan Palmer

Hi Ladies,

First of all, thank you so much for teaching at our Home Spun in July meeting. Participation by gals like you are what keep our guild as vibrant and lively as it is.

Thanks! Incidentally, about four of these projects were on the request list filled out by our members when they paid their dues!!!

I need your directions for your projects by the June 29th meeting, sooner if you have it on your computer and can send it to me....and I can open it.

Our tips this year are:

- |               |   |
|---------------|---|
| Cindy Clark   | how to square up a quilt                                |
| Pat Lingle.   | teaching us how to make that darling and handy cup tool |
| Carol McRae   | cover/holder that she demonstrated last month           |
| Alba Papa     | mitering corners  |
| Sharon Reilly | paper piecing   |
| Carol Thommen | Dresden plate   |
|               | zippers   |

### July Workshop

Material List for Fractured Flowers Class, July 27th Sandra Ferguson teaching, \$10 and space still available

- Sewing machine and thread
- Rotary Cutter and mat
- 15" - 24" ruler, at least 4" wide to use with rotary cutter
- Soft pencil
- Few Pins
- Paper cutting scissors
- Scotch Magic Tape ( the opaque one )
- Two 16" squares of felt, flannel or thin batting
- Fabric -

Must have 4 repeats of a design that is well defined - not too busy. Should be able to cut a square or rectangle about 10 -12' each way. Good choice will have a background showing around the central design

continued on page 3

### INSIDE THIS ISSUE

2010 Officers	4
Block of the Month	6
Buzzings from the Bees	8
Challenge 2010	4
Charity Report	4, 5
Classified	5
Library Corner	6
Membership	2
President's Message	2
Programs	1, 3
Sunshine	5
Treasurer's Report	4
Volunteer Clean-up	2
Weather Cancellations	2
Upcoming Events	6

For up-to-date information and photos of Guild happenings...

Be sure to visit our website at <http://www.lakequilters.org>

Email additions or questions to [bonnie@lakequilters.org](mailto:bonnie@lakequilters.org)  
Bonnie Bull,  
Webmaster

### NEXT MEETING

July 27, 2010

Board Meeting  
Friday, July 9

**PLEASE TURN OFF  
CELL PHONES  
DURING MEETINGS**

## Ripples From Our President

By Linda Quinn



Linda Quinn

June 2010

It's here!!!! The "Each 1 Teach 1" notebook is in the guild library...this resource has information about guild members who are willing to share a technique or project they enjoy. Look through the notebook and contact one of our talented guild members to arrange a personalized learning experience for yourself or a group of guild members. Be sure and help the notebook grow by adding a page about what you would like to teach and encouraging other guild members to share their expertise.

Also, if you know someone who has been thinking about joining the guild this is a great time for them to give it a try. After July 1 the membership fee for new members is  $\frac{1}{2}$  price—that's only \$10 for 6 months of quilting fun! What a bargain...sorry this discount does not apply to former or renewing members.

Just a reminder, we are seeking volunteers for the Board: VP for Programs, VP for Membership, Secretary, and Treasurer. Please contact one of the current Board members to let us know you are interested in serving.

Thanks for your support,

*Linda Quinn*

## Membership News

Please make a change to your 2010 Directory under Advertisers.

The phone number for Smith Mountain Lake Quilting is incorrect. It should be [540-719-7845](tel:540-719-7845)

Don't forget your name tag!

Paula Stevens,  
Membership Chair

## Volunteer Clean-Up Schedule

Thanks to everyone who offered to set up before and clean up after Guild meetings. If you are unable to attend, please find a member to substitute for you. Try to arrive by 11:30 to finish setting up in time for Block of the Month at noon. Clean up immediately follows the Guild meeting. After vacuuming, please remember to remove any trash bags our members fill and visit the dumpster on the way home. Thank you to the June 29th volunteers.

*Pat Blice  
Janie Lawless  
Chris Patane  
Sue Dittler*

*July Reminder  
Sharon Cullen  
Sandy Horan  
Irene Capps  
Teena Livsey*

*Betty Huffman  
(483-0775)*

## WEATHER CANCELLATIONS

Notice of guild meeting cancellations due to bad weather will be posted on the WSLS website: <http://www.wsls.com>. Click on "Weather"/"Closings". A link to the WSLS web site can be found at the bottom of the HOME page on our web site (<http://www.lakequilters.org>)

For further information or questions, please contact the Guild President or the Program Chairperson (VP). Their contact information is listed in the newsletter under the current officers.

Programs and Workshops (Continued from Page 1)

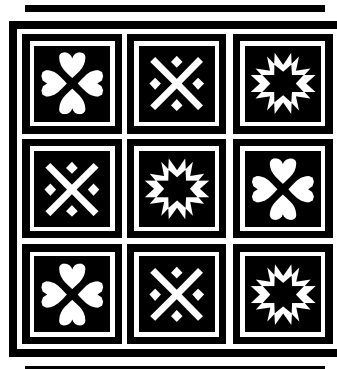
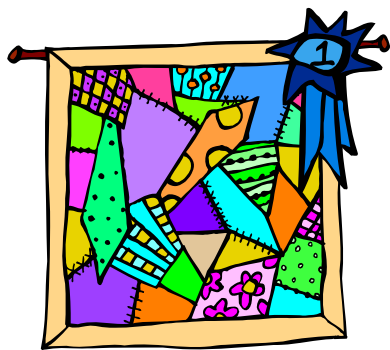
Book - NOT ESSENTIAL - but available at Marnie's "Fabulous Fractures " by Brenda Esslinger

**July** - I will have the Fractured Flower samples and sign up board. Sandra Ferguson, teacher.

**August** - Civil War embroidery, Karen Witt, teacher. BOM folks take note - this will REALLY ENHANCE your quilt blocks!

And remember...Cotton Theory is coming in September, so \$ave up. The course is a bit more expen\$ive, but you GET EVERYTHING - a PRE-CUT KIT, THREAD AND BOBBIN. Just ask any of the ladies who did this on retreat last year...and you will be rushing to sign up for this class again...with Sue Wilson and Momma Betty.

Any questions? Just call me.



### Guidelines for Workshops

Workshops are special opportunities for a small group of people (usually only 20) to have instruction from a guest teacher. Please follow these guidelines when signing up for a workshop:

- Sign-up will begin at 12:30 at the Guild meeting in the month announced for the workshop sign-up. Only people who have signed-up AND paid can attend the workshop. You are not considered "signed-up" until you pay your money!
- If you are unable to attend the guild meeting at which the sign-up occurs, have a friend sign you up and pay your money. We will **NOT** be taking phone sign-ups before this time...Please don't ask us to break this rule.
- Once the workshop is filled, a waiting list will be formed. If someone drops out of the class, the next person on the waiting list will be called. Please do not by-pass the waiting list by selling your spot to a friend. It is not fair to those who have been put on the waiting list.
- Once you are on the list, and find you will be unable to attend, you will not get a refund unless someone is found to take your place. Please call **Susan Palmer at 721-5299** as soon as you know you can't come and the next person on the waiting list will be called. If there is no one on the waiting list, you may then find your own replacement.

## Quilt Guild Challenge 2010 Girls Gotta Have Fun! Scrappy quilt.

Think about how you can use your scraps.....in "Girls Gotta Have Fun" scrappy quilt challenge 2010.

More important, have fun creating it!

Lets go over the rules:

1. Maximum size crib quilt; no minimum size.
2. Maximum size of a piece of fabric on the front 6"; no minimum size.
3. If there are borders on the quilt it needs to follow the size requirements in #2.
4. A scrap is left over fabric from a previous project.
5. Bindings and backing do not have to follow the scrap sizes.

Have fun while making your project!

Bette Gove  
kayaksm1@gmail.com



### Treasurer's Report

By  
Sandra Ferguson

<b>Balance (5/1/10)</b>	<b>\$8053.31</b>
<b>Income</b>	
Dues	80.00
Guests	10.00
<b>TOTAL INCOME</b>	<b>\$ 90.00</b>
<b>Expenses</b>	
Newsletter	18.90
Program	50.00
Membership	36.74
Charity	30.05
BOM	15.75
Guild Merchandise	94.00
<b>TOTAL EXPENSES</b>	<b>\$ 245.44</b>
<b>Balance (5/31/10)</b>	<b>\$7897.87</b>

## Charity Committee Report

On May 24 five guild members, Sandy Kelso, Alice Vreeland, Mimi McDermet, Marcia Wright and Betty Hatfield made deliveries to Franklin County locations. We met for lunch in Rocky Mount and finished delivering by 3:30. It was a very good day!

We were met at every place with very OPEN ARMS. Everyone is extremely grateful for all we do for them. The need is great, and we were happy to have been able to help.

We delivered 40 bears, 23 lap/baby quilts, 7 wheelchair bags, 26 pillow pals.

Some comments:

The hospital emergency room needs approximately 30 bears/pillow pals per month; the day we delivered the nurse gave a bear to a child that she said was "bouncing off the wall" and needed a bear!

Foster Care needs pillow cases - they are very important to the children to have something of their very own for their "stuff". There is also a need for teen quilts and pillow cases.

Franklin Health Care LOVES the wheelchair bags; in fact we observed one in use when we were there.

In April Katherine Lewis delivered to Bedford County:  
13 quilts, 17 totes, 47 bears, 10 pillow cases, 2 pillow pals, 33 bibs and 15 wheelchair bags.

continued on pg 5

## 2010 Officers

### President

Linda Quinn  
576-5071  
[smlquinn@gmail.com](mailto:smlquinn@gmail.com)

### VPs Programs (2010)

Susan Palmer  
721-5299  
[snobirdone@aol.com](mailto:snobirdone@aol.com)

Eloise Vass (2011)  
721-4007  
[larello@gmail.com](mailto:larello@gmail.com)

Ruth Ann Assaid (2011)  
992-6445  
[rassaid@yahoo.com](mailto:rassaid@yahoo.com)

### VP Membership

Paula Stevens  
721-2562  
[psiquilt@gmail.com](mailto:psiquilt@gmail.com)

### Secretary

Irene Capps  
576-5995  
[anarene258@gmail.com](mailto:anarene258@gmail.com)

### Treasurer

Sandra Ferguson  
721-7723  
[arandsferguson@aol.com](mailto:arandsferguson@aol.com)

**Rose-Marie's Sewing Studio  
Quilting Cottage**  
(540) 297-2841

Rose-Marie's Quilting Cot- tage is looking forward to helping you get your unfin- ished quilts finished so you can have a start toward your Christmas Presents. What nicer gift could you give, but a quilt made by you. Re- member, finished is beautiful.



*Rose-Marie's Quilting Cottage*

**Charity News**

Continued from page 4

In April Katherine Lewis delivered to Bedford County: 13 quilts, 17 totes, 47 bears, 10 pillow cases, 2 pillow pals, 33 bibs and 15 wheelchair bags.

We have kits for pillow pals, and patterns are available for bears. Please think about picking up some of these and making items for us to deliver.

The heart quilt pattern is also available. Make a few blocks, and we'll put them together into quilts.

Thanks for all your help!

Keep up the good work!!  
Your Charity Committee

**Old Trinity Schoolhouse Quilt Shop**



*Broad Selection of Fabrics, Books,  
and Notions*  
Visit our shop: 9am - 6pm Monday thru Saturday

Order Directly from our Web Site,  
[www.TrinityQuilts.com](http://www.TrinityQuilts.com)

3200 Trinity Road (I-81 to Exit 150B - 5.5 Miles North  
on US 220, Right at Trinity Road)  
P.O. Box 189 • Fincastle, Virginia 24090  
**540 • 992 • 1233**



**Cathy Fandel**  
1164 Dry Hill Road  
Ferrum, VA 24088  
**(540) 365-7430**  
[cathy@blueridgequilting.com](mailto:cathy@blueridgequilting.com)

**CLASSIFIED AD**

**For Sale:** Vintage 14 ft (plus extension) wooden ladder with lots of character. Great for displaying quilts. Asking \$45. Dave Peterson [588-5894](tel:588-5894).

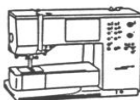


Reminder - **July 4th Independence Day.** Let's fly our American flags and remember those who gave the ultimate sacrifice for our country and our way of life.

**Bernina elna Janome**

Your complete store for top quality  
machines, classes, notions & service.  
Family business since 1976.

**Alpine Sewing Machine Co.**



3609 Brambleton Ave.  
Roanoke, VA 989-4412  
[alpinesewingmachine.com](http://alpinesewingmachine.com)

For MEMBERS you know who need a bit of cheer, please contact our Sunshine Chair, Madeline Demchak at. ([madal687@yahoo.com](mailto:madal687@yahoo.com))



*Block of the Month 2010  
Civil War Quilt*

Helen Buchanan, Chairperson

Date	Block	Teacher
June 29 *	Underground Railroad	Carol McRae
July 27	Flag	Karen Arends
Aug 24	Crown of Thorns	Dottie Wilson
Sept 24	House	Alice Vreeland
Oct 26	Courthouse Steps	Helen Buchanan
Nov 23	Border	Carol Althoff/ Gwen Bruington

- **May is the THIRD TUESDAY and June is the FIFTH TUESDAY**
- 

There will be a \$5 charge to take the class this year. This fee will pay for the printing costs and for assembling/quilting the teacher's blocks. This finished quilt will be raffled off to guild members. Those taking the class will be entitled to one free raffle ticket.

**BOONES COUNTRY STORE**

2699 Jubal Early Hwy., Burnt Chimney, VA 24065

(3 miles from Burnt Chimney on Rt. 116)

(540) 721-2478 FAX: (540) 721-4831

Tues-Sat, 9:30-5:30 Friday until 7:00 PM

Stop & shop at **BOONES COUNTRY STORE**

- We have Flannel Backed Tablecloth Fabric (by the yard) - just what you need for those back yard picnics!
- Just arrived - Full selection of Aunt Martha's Embroidery Patterns
- Come check out our selection of Ribbons! We have
- Novelty, Grosgrain, and Satin ribbon in a variety of colors, widths and prints.  
The perfect touch to complete your project!
- We now have the 10 degree Wedge Ruler from Fiber Arts for making Quilts without Corners
- Now in season and fresh from our Bakery - Blackberry Pies and Zucchini Bread

**LIBRARY CORNER**



The Library has added three new books on Appliqué.

*Hearts & Flowers: Hand Appliqué From Start to Finish*  
by Kathy Delaney

*The New Appliqué Sampler: Learn to Appliqué, the Piece O'Cake Way*  
by Becky Goldsmith

*Appliqué 12 Easy Ways!: Charming Quilts, Giftable Projects, and Timeless Techniques*  
by Elly Sienkiewicz

Please remember to return borrowed books and DVDs.

Anne Ochs

**The Lake Quilters Guild NEEDS YOU!!!**

Volunteers needed for the following positions for 2011:

Newsletter Editor

Bee Keeper

Historian

If interested, please call Linda Quinn at 576-5071.

**THE SEWING STUDIO, INC.**

1310 Memorial Blvd S, Martinsville, VA 24112

(276) 632-5700

bfeeny@embarqmail.com

Hours M-F 8:30 am to 5 pm; Sat 10-2

Come and visit us in our roomy, well-lit store. We have 3000+ bolts of fabric; books, notions, patterns, and supplies for quilters.

1st Tuesday of each month is our \$5.00 Sampler

*Authorized Baby Lock Dealer*

**June Featured Bee: The Hardy Bee**



The Hardy Bee meets monthly at Dot Jackson's home, 65 Waterpoint Court, Moneta the 4th Tuesday of the month, 9 to noon. Her phone number is \_\_\_\_\_

Members are Ruth Ann Assaid, Eloise L. Vass, Dot Jackson, Dot Hurt and Bonnie Campbell.

Our ongoing projects include learning new techniques, patterns, etc. and also Charity Bee projects. Ruth Ann has taught the rest of the group a Disappearing 9 Patch & Disappearing 4 patch. Also, interesting labels for our quilts.

We just completed a row-by-row amongst our Bee members.

The Hardy Bee will not meet again until September.

Eloise Vass



FABRICS, BOOKS, PATTERNS,  
NOTIONS, GIFTS & CLASSES

**New Christmas Fabrics arriving soon!!**

**Come check out our new designer  
button collection!!**



**All red/white/blue and black/white  
fabrics 15% off through July 15th!!**

SMITH MOUNTAIN LAKE QUILTING  
130 SCRUGGS RD.-#214  
MONETA, VA 24121  
540-719-7845

**Stop in to see the fabulous HOFFMAN batiks!  
They are going fast!  
Kaufman Orientals due by July 1!**

**The General Store  
www.generalstoresml.com**

213 Scruggs Road  
Moneta, VA 24121  
540-721-3009



**Check our upcoming Fall class  
schedule on our website, new  
classes filling up fast!**

**Thanks for your continued support!**

**QUILTING ESSENTIALS**

405 Apperson Dr., Salem, VA 24153  
540-389-3650

2000+ bolts of 100% Cotton Fabrics including a great selection of Flannels and 104" to 108" Quilt Backing Fabrics.

Books, Patterns, Notions,  
Quilting Supplies, Kits and Classes.

Also Anchor Floss and Aurifil Thread.

We carry the Alto's 2 Fabric Cutting System, the Alto Pro and most all other Alto supplies.

We also carry Locker Hooking supplies and provide classes.



Hours: Mon-Fri 10:00 am-5:30 pm • Sat 10:00 am-4:00 pm



## Buzzings from the Bees by Susan and Chris

- **Bag Ladies Bee** (Moneta area) - meets the 1st and 3rd Tuesday, 10:00 am to ??? at Mary Ann Spangler's. Bring lunch. Will be making favors for the Guild's 2010 Christmas luncheon. Will continue to work on charity items for children. Also, now using completed Friendship Squares to create other items. **(Full at this time.)**
- **Bluewater Bee** (Moneta) - meets 1st Tuesday, 10:00 am to 1:00 pm, at Smith Mountain Lake Quilting Shop; Contact Marnie Brush. Working on School House Quilt Block of the Month Exchange and charity quilts for Bedford Social Services. Will display July 2010 **(Full at this time.)**
- **Buzzin' Bees** (Boones Mill) - meets 1st Thursday 9:00 am to ??? at Velma Meador's home. Bring lunch. **(Full at this time.)**
- **Friendship Bee** (Hardy) - meets 2<sup>nd</sup> and 3<sup>rd</sup> Tuesday, 10:00 AM to ??? Call Gloria Thar or Jeannette Chace for meeting location. Bring lunch. Bring anything you've started or want to start; there will be help for new quilters. **(New members Welcome).**
- **Hardy Bee** (Moneta) - meets 4th Tuesday, 9:00 am to noon, at Dot Jackson's home. Working on "row by row" quilts and continuing making charity projects. Will display June 2010 **(Full at this time.)**
- **Kept in Stitches Bee** (Hillcrest Heights) - meets 1st and 3rd Thursday, 10:00 am to 3:00 pm, at Alma Carter's home. Main focus for 2010 - Finish UFO's and block of the month. Will not be meeting in July or August. Will resume meetings on Sept. 2nd. **(Full at this time.)**
- **Ladies of the Evening Bee** (Wirtz) Paula Stevens. Meetings temporarily suspended until new host/meeting location identified.
- **Material Girls Bee** (various towns)- meets 1st and 3rd Tuesday, 9:30 am to 2:30 pm. Call Marcia Wright or Kate Holdgreve. Bring lunch. Making quilts for each member. Will display in October 2010. **(Full at this time.)**
- **River Queen Bee** (Goodview) - meets 3rd Tuesday, 12:30 pm. Call Linda Pote or Sharon Cullen for meeting location. Working on UFO's, charity items for hospitals and battered women shelters, and a new technique/design for pocketbooks. Will display in August 2010. **(New Members welcome.)**
- **Sassy Stitchers Bee** (Roanoke) - Meets 3rd Tuesday 10:00 am to 3:00 pm at St. John Lutheran Church. Contact Joyce Noell for information. Group will not meet in June, July and August. They have completed table decorations for Christmas luncheon. Will resume meeting in September with new projects and plans. Will display in Sept. 2010 **(Always open to new members.)**
- **Shady Ladies Bee** (Moneta) - meets 1st Monday, 1:30 PM to 3:30. Working on Round Table charity quilt (row-by-row) and Dresden wall hanging as well as scrappy, crazy quilt blocks. Beginning quilting is their focus. Group will break for summer months. Call Sue Dittler for September's location. **(Full at this time.)**
- **Southside Bee** (Union Hall) - meets 2nd Thursday, 10:00 am to 2:00 pm. Bring lunch. Call daytime hours only Sandy Randall. **(Full at this time.)**
- **Stitches In Time** (Goodview) - Appliqué Bee 4th Wednesday, 10:00 am. Bring lunch. Call Kinza Pickelsimer. Project: Hearts and Flowers blocks by Kathy Delaney. Will display in November 2010.
- **Sunshine Bee** (White House Corner/Huddleston) - meets 1st Thursday, 10:00 am to 2:00 pm, at Cindy Clark's home. Bring lunch. **(Full at this time.)**

**IF YOU WISH TO BECOME A MEMBER OF A BEE or IF YOU HAVE ANY UPDATES/CHANGES FOR THE ABOVE BEES, CALL SUE DITTLER (587-5925) OR CHRIS PATANE (297-0994) BEFORE THE 3RD OF EACH MONTH.**